



WOMEN'S GIVING
A L L I A N C E
THE COMMUNITY FOUNDATION



WOMEN'S GIVING
A L L I A N C E
THE COMMUNITY FOUNDATION



WGA Overview
Who We Are
Our Grantmaking
2022



Women's Giving Alliance

Our members pool their gifts and have made more than \$7.6 million in grants to benefit women and girls since our inception in 2001.

Our Mission

Inspiring women to be strategic philanthropists and investing in the lives of women and girls in Northeast Florida.

WGA's Grantmaking

Women's Giving Alliance awards grants to organizations that serve women and girls in Baker, Clay, Duval, Nassau, Putnam and St. Johns Counties. WGA makes strategic, research-based grants that facilitate systemic change to improve how women and girls are served in Northeast Florida. We apply creative solutions to critical needs, focus on equitable grantmaking, and produce measurable impact on the lives of women and girls. Our current focus is Breaking the Cycle of Female Poverty: Intervention and Prevention.

The Annual Membership Contribution

Is a tax-deductible contribution of \$1,500. Of that amount, \$1,000 goes directly to grants, \$200 helps defray overhead and expenses, and \$300 is added to endowment. Women also have the option of making a one-time Legacy gift of \$25,000 or more (payable over five years) to endow a WGA membership in perpetuity.

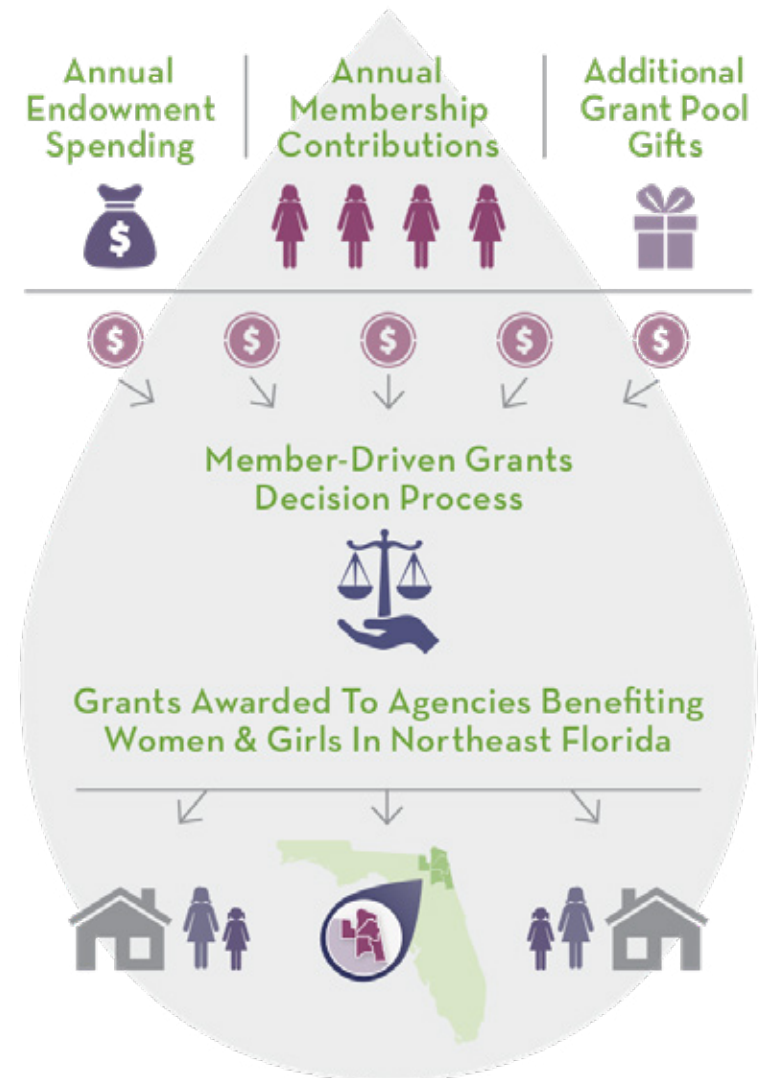
An Initiative of The Community Foundation for Northeast Florida

WGA benefits from The Community Foundation for Northeast Florida's more than 50 years of experience and financial stewardship.

For more information, visit the website www.wganefl.org, call (904) 356-4483, or check out our social media links on page 7.

How It Works

Collective Giving



2021-2023 Grants

Ability Housing, Inc. – The Northeast Florida Villages Program

\$60,000 Duval County

The Northeast Villages Program has 332 quality, affordable rental units in Duval County. It also offers comprehensive case management services, on-site recovery support, trauma-informed care, financial education services, employment training and job placement, and access to primary and behavioral healthcare. With this grant, 52 women will receive the comprehensive care this program provides.

Family Promise of Jacksonville – A Promise of Hope

\$50,000 Duval County

Family Promise of Jacksonville changes outcomes for low-income mothers at risk of or experiencing homelessness by providing temporary shelter using partnerships with local congregations. Family Promise provides holistic, individualized case management that helps mothers transition into affordable housing. The WGA grant will support 40-50 families through the A Promise of Home program.

Generation USA – Generation Jacksonville IT and Medical Programs

\$75,000 Duval, St. Johns, Clay, Baker and Nassau Counties

Generation USA is a bootcamp-style training program that focuses on the technical and soft skills employers say are most needed in the workforce. Generation USA partners with local employers to provide full-time jobs or paid internships upon successful completion of the training. This grant will provide a stipend to 70 women in training and 24 in internships so

they can afford to participate full-time in the IT and Administrative Medical Assistant programs.

Generation W – Generation WOW

\$75,000 Duval, St. Johns, Clay, Nassau, Putnam Counties

The Generation WOW program provides girls in middle and high school with mentorship, guidance, and specific tools to better navigate post-secondary education and potential careers. This grant will allow 75 girls to participate in Generation WOW clubs designed specifically for girls who are at or near the poverty level, including those in rural areas, by providing tablets and accessibility resources so they may participate in remote learning activities.

Lutheran Social Services of Northeast Florida, Inc. – Steps to Success

\$60,000 Duval County

Lutheran Social Services provides struggling families with the services and support they need to overcome hardship and regain self-sufficiency. The Steps to Success program bundles financial counseling, career coaching, and benefits assistance into one comprehensive support system. This grant will allow Lutheran Social Services to serve 60 women over the two-year grant period.

Micah's Place – Breaking the Barriers

\$60,000 Nassau County

Micah's Place provides prevention and intervention services to victims of domestic violence. The Breaking the Barriers program helps to cover essential costs many survivors encounter, particularly related to financial instability. This grant will allow 15 to 25 women to access this program.

Rebuilding Ex-offenders Successfully Through Opportunities Rehabilitation & Education (R.E.S.T.O.R.E.) – Optimism to the Future

\$75,000 Duval County

R.E.S.T.O.R.E. is dedicated to reducing the rate of recidivism by providing services and resources to formerly incarcerated women to successfully transition into mainstream society. Optimism to the Future provides safe housing and addresses the trauma the women have endured before, during, and after incarceration through educational support and mental health, substance abuse, and resiliency programs and treatment to promote stable emotional health, sober living, and enhanced individual resiliency. This grant will allow 18 to 24 women to access this program.

Sanctuary of Northeast Florida, Inc. – Girls on 8th

\$19,000 Duval County

Sanctuary's mission is to encourage and empower Jacksonville youth and families to become strong and independent by offering afterschool programs and summer camp for at-home youth in Springfield and surrounding neighborhoods. The Girls on 8th initiative focuses on the unique needs of female youth to help them reach their potential and rise out of poverty. This grant will provide for 20 girls during the school year and 30 girls in summer camp.

UF Health Jacksonville (Shands Jacksonville Medical Center, Inc.) – Community Health Worker Institute

\$100,000 Duval County

Through its Urban Health Alliance program, UF Health focuses on leveraging social services, education, research and policy resources, and activities to improve the lives of fellow Jacksonville residents. This grant

will allow the Community Health Worker program to train 20 lay members who share ethnicity, language, socioeconomic status, and life experiences with the community members they serve, providing frontline agents of change to build community healthcare capacity and self-sufficiency.

Empowerment Resources Inc.

\$13,500 – A donation for general operating support. Duval, St. Johns, and Nassau Counties

Empowerment Resources, Inc. serves at-risk youth and families by providing programs and services that positively impact the whole family.

To learn more about our grantmaking, please visit our website

wganefl.org/what-we-do/our-grantmaking

**Apply For a Grant
Our Grantmaking Process
Grantee Success Stories
Grants History**

Grantmaking Principles

In its grantmaking, WGA:

- Uses community research to develop initiatives
- Focuses on prevention and effective intervention
- Supports new ideas and untested efforts, as well as programs that have demonstrated results and impact
- Establishes expectations for sustainability, significant lasting value and impact
- Applies an equity lens

Recent Grants

WGA has awarded over \$7.6 million in grants since 2001. Below is a summary of two-year grants made over the prior two grant cycles.

2020-2022 Focus: Breaking the Cycle of Female Poverty

Barnabas Center, Inc.:
Hope Builders for Women 2.0
\$60,000 (Nassau County)

BEAM (Beaches Emergency Assistance Ministry): Single Parent Program
\$80,000 (Duval and St. Johns County)

Boys & Girls Club of Nassau County:
SMART Girls Initiative
\$46,000 (Nassau County)

Delta Research and Educational Foundation: Dr. Betty Shabazz Academy/ Growing and Empowering Myself Successfully (BSA/GEMS)
\$10,000 (Duval County)

Girl Scouts of Gateway Council:
Community Development Troops
\$100,000 (Duval, St. Johns, & Clay Counties)

MaliVai Washington Kids Foundation, Inc.: Girl Power!
\$100,000 (Duval County)

Rethreaded Inc.:
Survivor Development Program
\$110,000 (All Northeast Florida Counties)

Year Up Jacksonville:
Workforce Development Program
\$80,000 (Duval County)



2019-2021 Focus: Breaking the Cycle of Female Poverty

Catholic Charities St. Augustine Regional Office: Project Forward Families
\$120,000 (St. Johns County)

Center for Children's Rights:
Hope Pipeline Project
\$50,000 (Duval County)

First Coast No More Homeless Pets: Veterinary Technician Education and Employment Program
\$78,614 (Duval County)

Gateway Community Services, Inc.:
Women in Transition
\$100,000 (Duval County)

Helping WIN, Inc.: Grants with Dignity
\$45,243 (All Northeast Florida Counties)

St. Gerard Campus: Homeless Maternity Students Residential/Dormitory Program
\$40,000 (Duval, St. Johns, & Clay Counties)

Volunteers in Medicine: Women's Health and Wellness Program
\$72,092 (Duval County)

Statement of Values

Diversity, equity and inclusion are central to WGA's vision and mission. WGA actively invites women of different backgrounds, perspectives, opinions, passions, experiences, personalities, ideologies, and lifestyles. We believe that bringing together diverse voices – and the conversations and connections that result – makes us stronger.

Looking to Connect with WGA?


Join us at a WGA event! We meet regularly to learn and grow together. All of our events are open to everyone, so feel free to bring a friend.


WGA hosts a number of events throughout the year, including:


- Large semi-annual luncheons in the spring and fall (Member Forum and Annual Meeting)
- Smaller educational events, lectures and panel discussions
- Connector Groups – Informal social events in your neighborhood

Register for all WGA events online at: <https://www.wganefl.org/calendar>

Join the Conversation!

 www.facebook.com/womensgivingalliance

 www.linkedin.com/groups/6612748

 [@womensgivingJAX](https://twitter.com/womensgivingJAX)

 [womensgivingalliance](https://www.instagram.com/womensgivingalliance)

For More Information

Women's Giving Alliance

Jan Healy, President
904.716.9161
jan@charlesdhyman.com

The Community Foundation for Northeast Florida

Kacie Smyth, Women's Giving Alliance Director
904.224.7203
ksmyth@jaxcf.org